

AGES 8+



# LPSO Dancing Dog

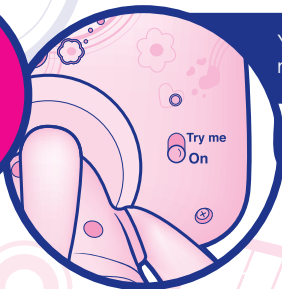


Product and colors may vary.

 **x3 | BATTERIES INCLUDED**

Replace with 3 x 1.5V "AAA" or LR03 size alkaline batteries. Phillips/cross head screwdriver (not included) needed to replace batteries.

## Before You Begin



Your pet comes packaged in "TRY ME" mode. Move the switch to the "ON" position.

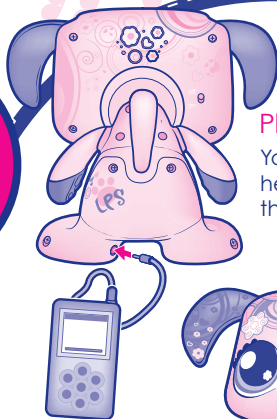
## Playing with Your Pet

There are two ways to play with your pet: **plugged and unplugged.**

**NOTE:** Not compatible with all MP3 music players.

### Plugged

You can also connect her to your computer through its USB port.



### Unplugged

Depending on the play mode you choose, your pet will have different reactions when you press her buttons. The table below explains her reactions.

Button Reaction	Press Type	Plugged Reaction	Unplugged
Nose	1 press	Bark	She dances. Press the button again to make her stop.
Nose	2 presses	Sneeze	Sneeze
Tail dancing	1 press	She stops dancing and playing music for 5 minutes.	She stops and playing music for 5 minutes.
Tail	Press and hold button for a few seconds.	She goes to sleep.	She goes to sleep.
Nose & Tail	Press buttons at the same time and hold for a few seconds.	She stops dancing, but plays music.	Nothing happens.

# Your pet loves to play music!

When you plug in your MP3 player or computer, she will make a happy sound. When you unplug the music, she will make a sad sound.

When you first play music, your pet will dance a lot for a few minutes. After that, she'll slow down. If you want her to dance more, press her buttons or stop and restart your music player.

## More fun features:

### Your pet detects beats.

When plugged in, your pet will know the music's rhythm. Play a song, and watch her lights flash to the beat.

### She likes fast songs!

Your pet will make an excited sound when she plays a fast song.

### Your pet has different moods.

She will show you her different moods through changing light patterns and sounds. Her moods are random.

### Helpful Information:

If you do not press her buttons for 50 minutes, your pet will shut off. This will happen even if she's playing music.

## Your pet comes with a secret code!

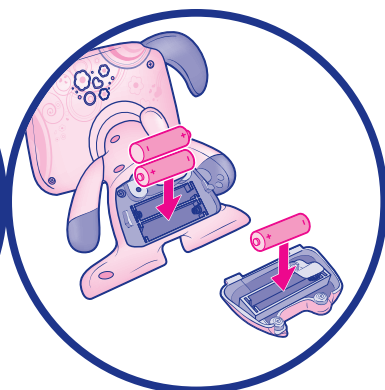
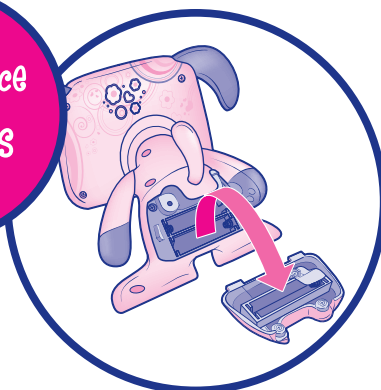
It unlocks special features at [www.LPSO.com](http://www.LPSO.com) You can find the code on the bottom of your pet's foot.



## Troubleshooting

If the toy doesn't respond, press the reset button on the back (use a ballpoint pen or a paper clip) or change the batteries.

## To Replace Batteries



Use a Phillips/cross head screwdriver (not included) to loosen screw in battery compartment cover (screw remains attached to cover). Remove cover. Remove and discard old batteries. Replace with 3 x 1.5V "AAA" or LR03 size alkaline batteries. Replace cover and tighten screw.

# IMPORTANT: BATTERY INFORMATION

## CAUTION:

1. As with all small batteries, the batteries used with this toy should be kept away from small children who still put things in their mouths. If they are swallowed, promptly see a doctor and have the doctor phone (202) 625-3333 collect. If you reside outside the United States, have the doctor call your local poison control center.
2. Always follow the instructions carefully. Use only batteries specified and be sure to insert them correctly by matching the + and – polarity markings.
3. Do not mix old batteries and new batteries or standard (carbon-zinc) with alkaline batteries.
4. Remove exhausted or dead batteries from the product.
5. Remove batteries if product is not to be played with for a long time.
6. Do not short-circuit the supply terminals.
7. Should this product cause, or be affected by, local electrical interference, move it away from other electrical equipment. Reset (switching off and back on again or removing and re-inserting batteries) if necessary.
8. **RECHARGEABLE BATTERIES:** Do not mix these with any other types of batteries. Always remove from the product before recharging. Recharge batteries under adult supervision. **DO NOT RECHARGE OTHER TYPES OF BATTERIES.**



### FCC statement

This device complies with part 15 of the FCC Rules. Operation is subject to the following two conditions: (1) This device may not cause harmful interference, and (2) this device must accept any interference received, including interference that may cause undesired operation.

This equipment has been tested and found to comply with the limits for a Class B digital device, pursuant to part 15 of the FCC Rules. These limits are designed to provide reasonable protection against harmful interference in a residential installation. This equipment generates, uses and can radiate radio frequency energy, and, if not installed and used in accordance with the instructions, may cause harmful interference to radio communications. However, there is no guarantee that interference will not occur in a particular installation. If this equipment does cause harmful interference to radio or television reception, which can be determined by turning the equipment off and on, the user is encouraged to try to correct the interference by one or more of the following measures:

- Reorient or relocate the receiving antenna.
- Increase the separation between the equipment and receiver.
- Consult the dealer or an experienced radio/TV technician for help.

Caution: Changes or modifications to this unit not expressly approved by the party responsible for compliance could void the user's authority to operate the equipment.



**NOTE TO UK CONSUMERS:** This product and its batteries must be disposed of separately at your local waste recycling centre. Do not dispose of in your household waste bin.

